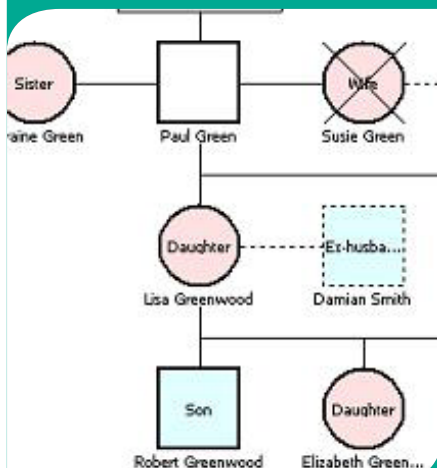


Press
Release
4th July 2009



Family tree function added to Crosscare

A pictorial family tree, or Genogram, function has been added to Crosscare, primarily to help hospice customers for whom the immediate family and support network of a patient is of significant importance when providing care.

The new function replaces the Family and Friends window in Patient Administration and will be shipped to users in the very near future.

The Genogram shows the patients' immediate and extended family, and even shows relatives who have died and ex-wives and husbands. It can cater for four generations of the family and provides quick and easy navigation around the family unit. Clicking on one of the family members in the tree will take the user directly to that members' details, showing their own family tree in a new tab, and allowing easy entry of further information and other members of their immediate family, making the entry of the overall extended family much quicker and simpler.

Press Release

4th July 2009

For more information

About Health & Care

Advanced Health & Care is a leading supplier of IT management systems for urgent & unplanned care, homecare, residential care, hospices, mobile information for community carers and back-office management systems for NHS trusts, local authorities and care providers.

Working with partners in the NHS, local government and the private sector, Advanced Health & Care is delivering IT solutions in support of safe, efficient care delivery with integrated management information. Advanced's unique proposition is its range of integrated care solutions offering visibility of information for both the commissioner and care provider.

The Advanced Health & Care suite of products includes: Adastra, iNurse, Crosscare, eFinancials Smart Business Suite, Saturn & StaffPlan.

Contact us

Unit 4 Eurogate Business Park | Ashford | Kent | TN24 8SB **t:** +44 (0)1233 722 700 **f:** +44 (0)1233 722 701
e: ahcmarketing@advancedcomputersoftware.com **www:** www.advancedcomputersoftware.com/ahc

Legal information

Healthy Software Ltd trading as Advanced Health & Care, part of Advanced Computer Software Group. Registered in England, company number 3656609.
Registered office: Munro House | Portsmouth Road | Cobham | Surrey | KT11 1TF.
Healthy Software Ltd recognises the trademarks of other companies and their respective products in this document.

Version 2.3 0810 © Copyright Healthy Software Ltd 2010